

# ADVENTURE ATTRACTIONS

## ABOUT US

Our Team is dedicated to transforming your vision into a tangible design for your project, and we have confidence that our proposal will align with your expectations. Our primary objective is to craft an ideal experience for families, play enthusiasts, or adventurers alike.

At HPS Play Company, we hold ourselves to exceptionally high standards and are proud being the creators of some of the best attractions in the market. Whilst working with HPS Play Company, we want you to feel that you are in good hands.

We take pride in what we do, which means you can expect the following:

## EXPERIENCE

- More than 20 Years of experience in the international leisure market, including 12 years in the GCC region.
- Our clients include Atlantis, The Palm, EMAAR, Magic Planet, Sega Republic, KidZania, IMG Worlds of Adventures, Chimelong Theme Parks, Sea World – just to name a few.
- Our creative and technical design teams have a combined experience of 15 years and have created some of the most innovative and unique playgrounds and adventure spaces.
- Our customer satisfaction with on-time design development is highly praised, known for detailed design and built project accomplishment.
- Professional and highly qualified Design Team Leaders and Design Crew.

## QUALITY

- With collaborative efforts of the best suppliers, we have the capability to create state of the art leisure solutions, ensuring your vision coming to life.
- All our Design Developments conform to specific European Norms and Regulations.

## RELIABILITY

- At HPS Play Company we focus on the importance of building a long-term, professional business relationship. Together with our experienced and trained HPS Crew, we are able to provide solutions as quickly as possible, while maintaining our high standards of quality, safety, and professionalism.
- Our expertise in delivering exceptional projects with an on-time hand over is why our clients prefer to work with us. Choosing HPS Play Company as your partner gives you full confidence in providing a fun and safe environment for play, education, and adventure.



04 AERIAL ADVENTURE COURSE

08 KIDS OBSTACLE COURSE

10 45° ZIPLINE

12 ZIPLINE BELAY JUMP

14 ZIG ZAG ZIPLINE

16 QUICK FLIGHT JUMP

18 BAG JUMP

20 AERIAL ADVENTURE TRAIL

22 ADVENTURE SWING

24 ADVENTURE PLAY TRAIL

26 ADVENTURE SOFT PLAY

28 SUPER ZIPLINE

30 WING SUIT JUMP PLATFORM

32 SKYRIDER

36 ALPINE COASTER

38 INSTAGRAMMABLE SWING

40 AERIAL ROPE NET TRAIL

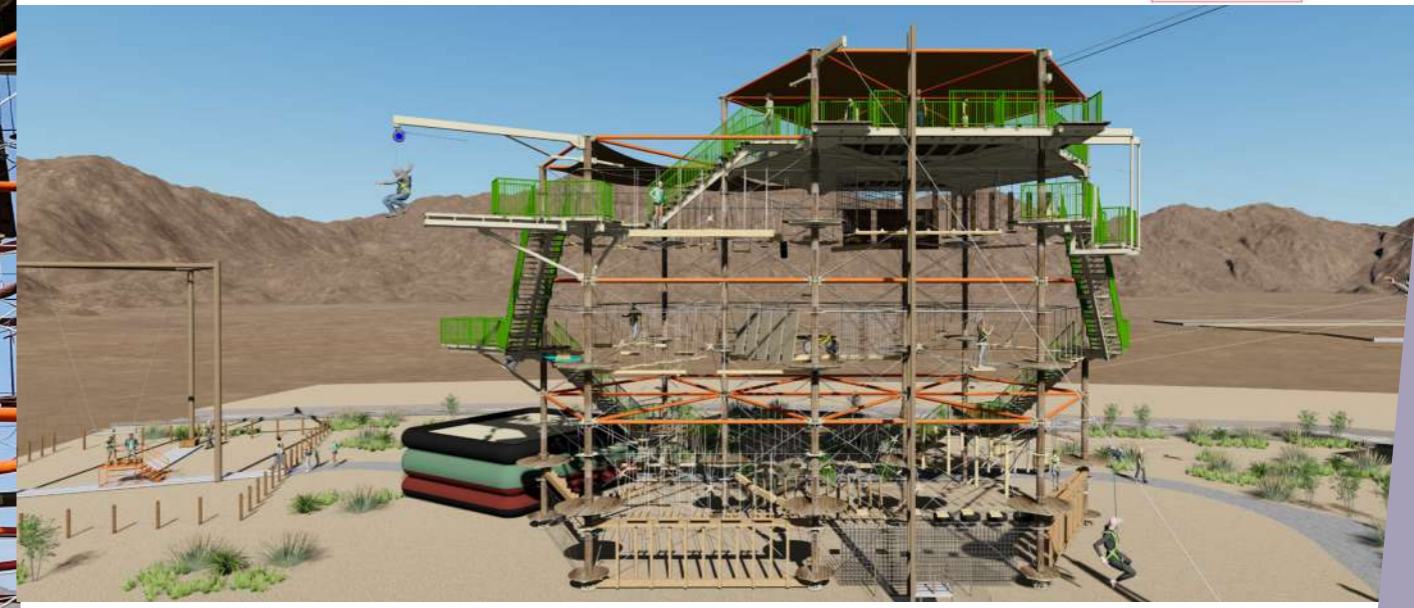
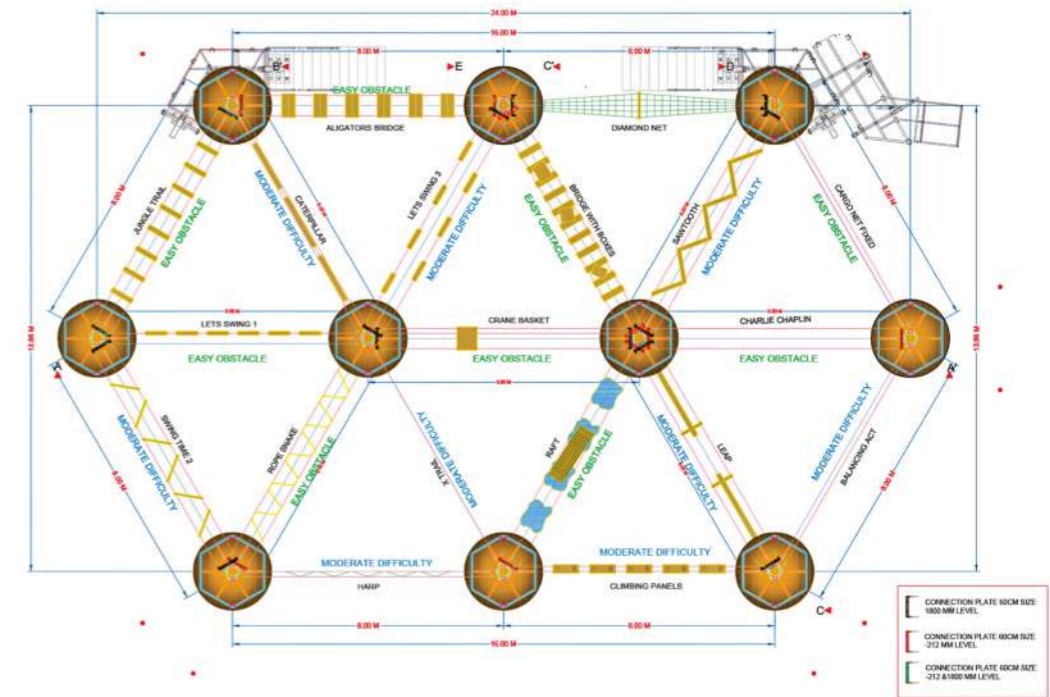
42 ACTIVE ADVENTURE CONCEPT -1

44 ACTIVE ADVENTURE CONCEPT -2



# AERIAL ADVENTURE COURSE

## ADVENTURE ROPE COURSE PLAN



Adventure Rope Course Challenge is an exhilarating outdoor recreational facility designed to provide participants with an adrenaline-pumping experience while promoting physical fitness, teamwork, and personal growth. With careful planning and adherence to safety standards, this concept promises to be a unique and memorable attraction for adventure seekers of all ages.

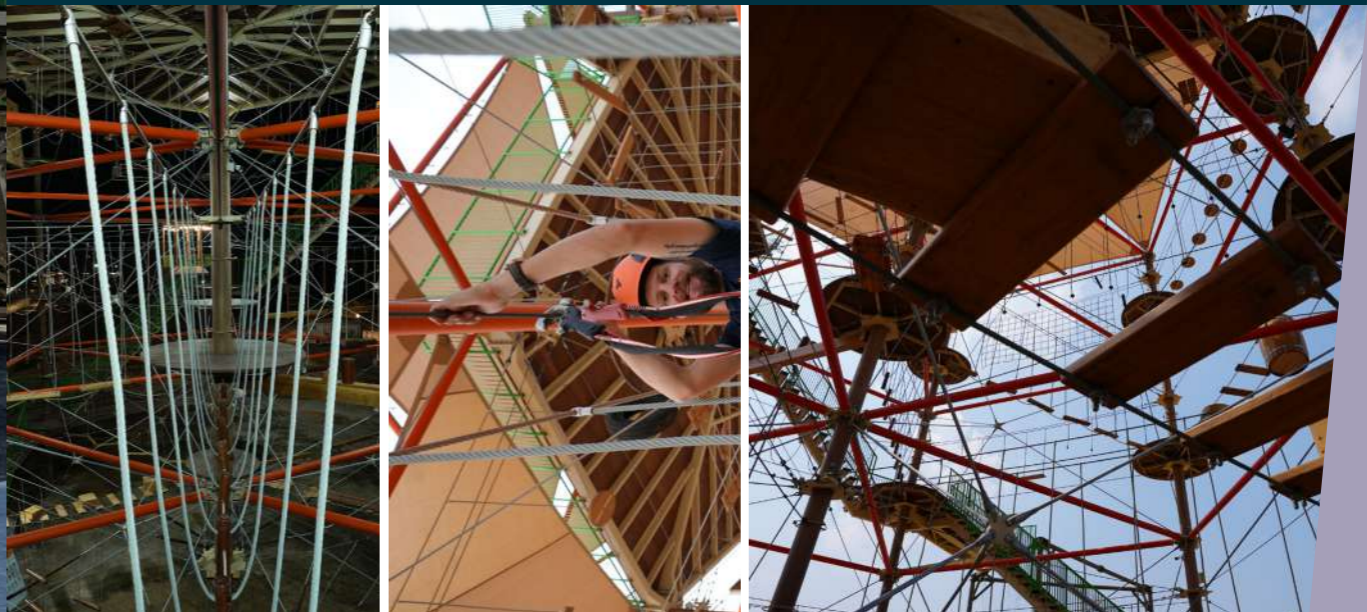


**KEY FACTS**

- No. of Poles: 10
- No. of Levels: 03
- No. of Obstacles: 57
- Age Limit: 6 years and onwards
- Total Capacity: Approx. 147 users at a time
- Duration: 2-2.5 hours
- Attraction Height: 18m

**OBJECTIVES**

- To offer an exciting and safe adventure for individuals and groups.
- To encourage physical activity and promote fitness.
- To foster teamwork, communication, and problem-solving skills.
- To create a memorable and challenging experience for participants of all ages.

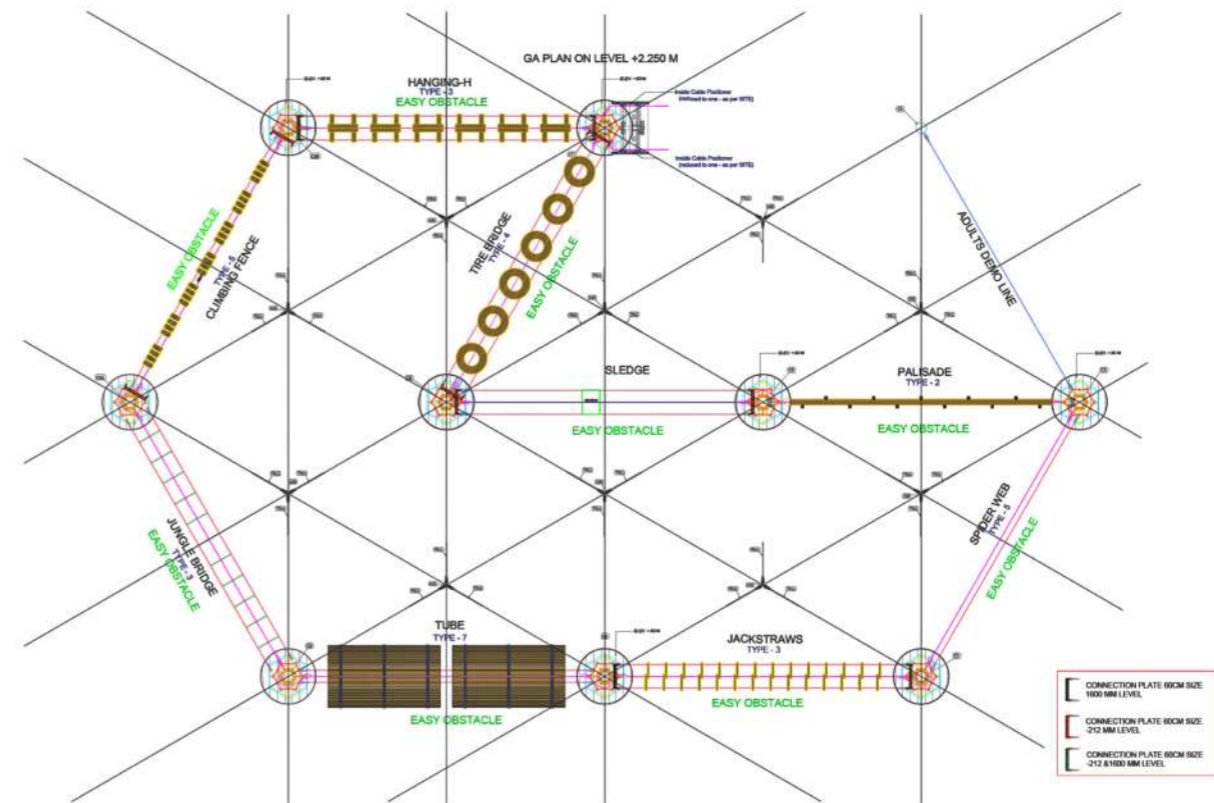


An obstacle ropes course typically includes a combination of high and low ropes elements, climbing walls, ziplines, cargo nets, swings, and other challenges designed to test physical and mental abilities. With careful planning and adherence to safety standards, this concept promises to be a unique and memorable attraction for adventure seekers of all ages.

# KIDS OBSTACLE COURSE



## KIDS ROPE COURSE PLAN

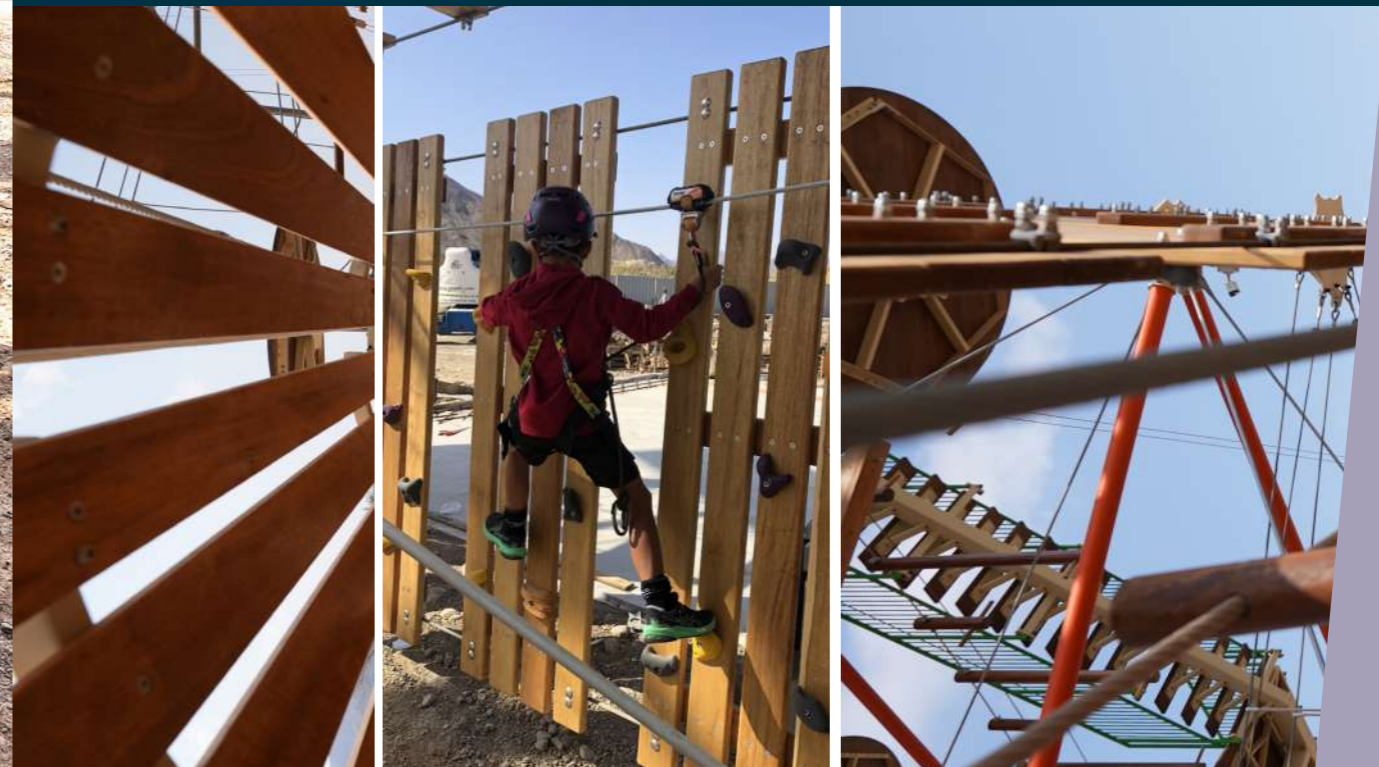


### KEY FACTS

- No. of Poles: 9
- No. of Obstacles: 9
- Age Limit: 3 to 6 years
- Total Capacity: Approx. 27 users at a time
- Duration: 1 hour

### OBJECTIVES

- To provide a fun and physically active recreational activity for children.
- To promote teamwork, problem-solving, and self confidence.
- To create a safe and memorable adventure environment for kids of various ages.



Adventure Kids Course is a thrilling outdoor obstacle course tailored for children. It features age-appropriate challenges like mini climbing walls, tunnel crawls, balance beams, rope swings, and cargo nets. Our goal is to provide a fun and safe outdoor adventure experience for children. With a range of obstacles and strict safety standards, it's the perfect attraction for families, schools, and children's events, promoting physical activity, teamwork, and unforgettable experiences.



## 45° ZIPLINE



### KEY FACTS

- Age Limit: 6 years onwards
- Total Capacity: 1 guest at a time
- Body Weight: 120 Kg. maximum
- Throughput: Approx. 30 riders per hour

### OBJECTIVES

- To offer an unforgettable ziplining experience with a 45 degree descent angle.
- To cater to adventure enthusiasts seeking an adrenaline rush.
- To provide a safe and thrilling adventure in a scenic natural setting.



45 Degree zipline aims to provide adventure enthusiasts with a unique and heart-pounding ziplining experience through its steep descent. With a strong focus on safety and the breathtaking natural surroundings, this concept promises to become a sought-after attraction for thrill-seekers and those craving an unforgettable adventure in an exhilarating outdoor environment.



## ZIPLINE BELAY JUMP



### KEY FACTS

- Age Limit: 6 years onwards
- Total Capacity: 1 guest at a time
- Body Weight: 120 Kg. maximum
- Throughput: Approx. 30 riders per hour

### OBJECTIVES

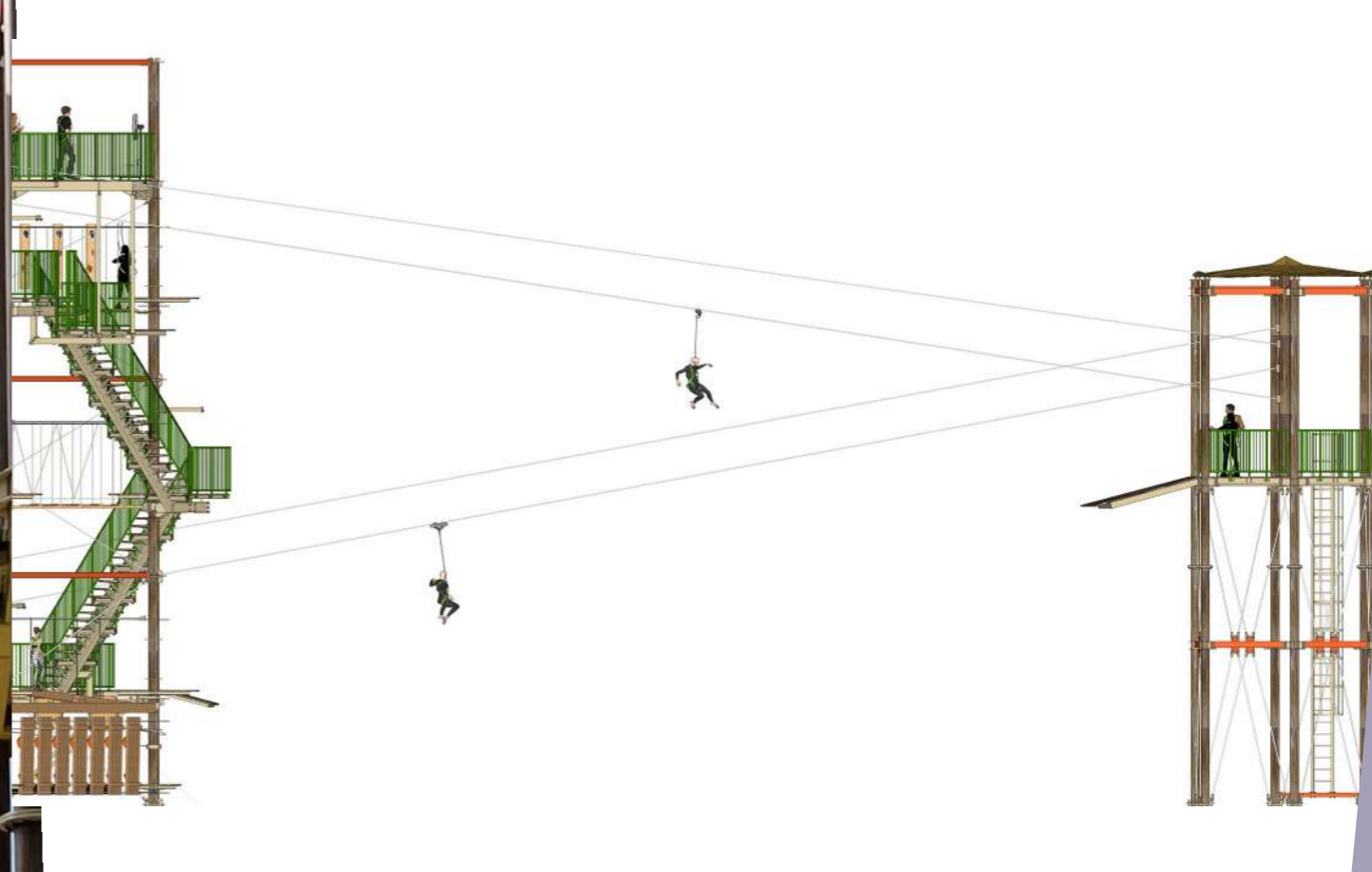
- To provide participants with a heart-pounding belay jump experience.
- To offer a thrilling yet safe adventure in a controlled environment.
- To cater to adventure enthusiasts and adrenaline seekers of various skill levels.



Belay Jump Adventure aims to provide adventure lovers with an exhilarating and heart-pounding jump experience while maintaining the highest standards of safety and environmental responsibility. The belay jump involves participants leaping from a designated height, typically from a cliff or platform. A dynamic belay system will ensure participants are safely lowered to the ground after the jump.



## ZIG ZAG ZIPLINE



### KEY FACTS

- Age Limit: 6 years onwards
- Total Capacity: 1 guest at a time per line
- Body Weight: 120 Kg. maximum
- Throughput: Approx. 30 riders per hour

### OBJECTIVES

- To offer an unforgettable and unique ziplining experience.
- To create an atmosphere of friendly competition and teamwork.
- To provide a safe and heart-pounding adventure experience for individuals and groups.



Zig Zag Zipline aims to provide adventure enthusiasts with a unique and thrilling two-way ziplining experience, combining competition and teamwork. The central attraction features a dual ziplining setup, allowing participants to zip back and forth between two platforms. Participants can race against a friend, family member, or colleague, creating a friendly competitive element.





## QUICK FLIGHT JUMP



### KEY FACTS

- Age Limit: 6 years onwards
- Total Capacity: 1 guest at a time
- Body Weight: 120 Kg. maximum
- Throughput: Approx. 30 jumpers per hour

### OBJECTIVES

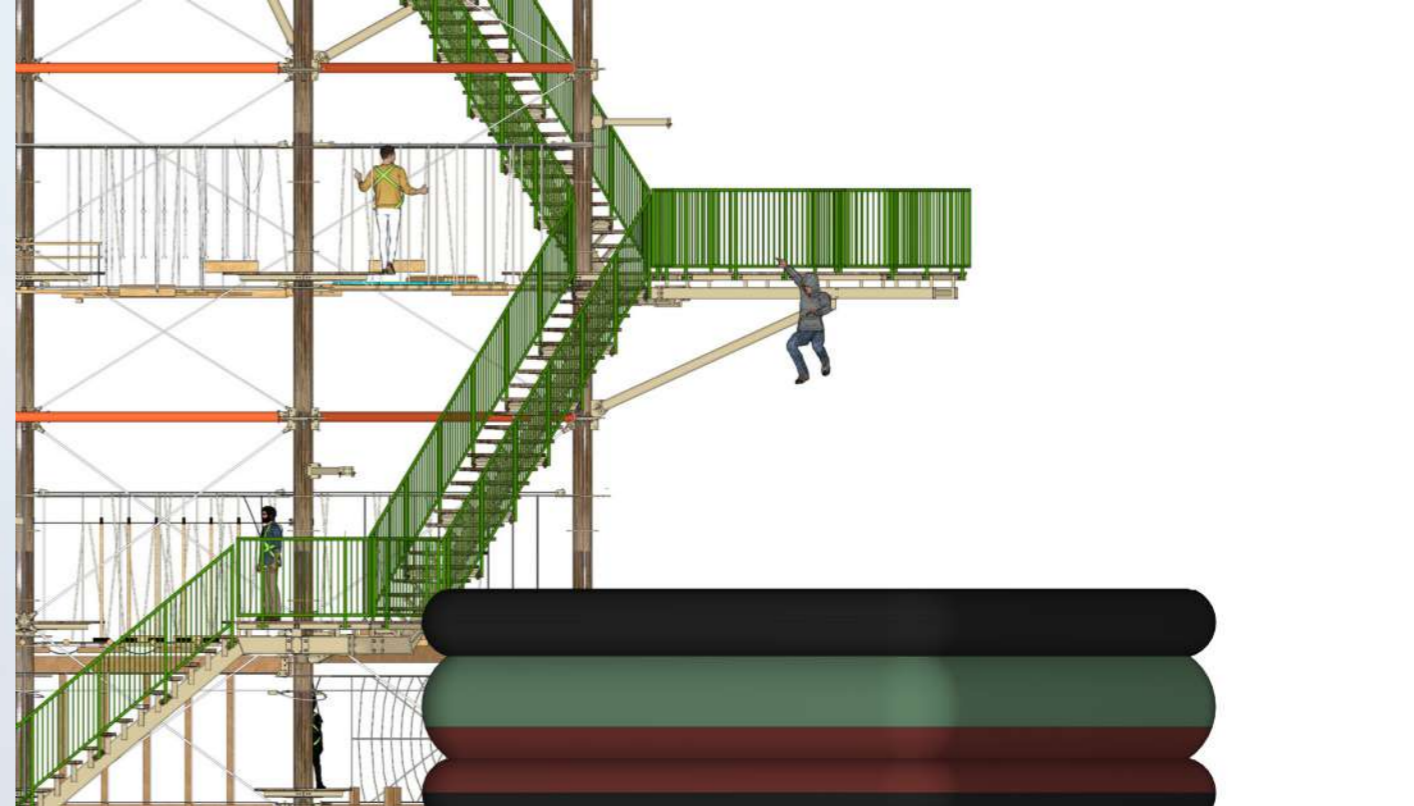
- To offer an unforgettable freefall experience that mimics the sensation of skydiving.
- To create a safe and thrilling environment for participants to experience the sensation of flight.
- To cater to adventure enthusiasts seeking an adrenaline rush and memorable adventure.



Quick Flight Jump is an exhilarating adventure attraction designed to provide participants with a thrilling freefall experience. The central attraction is a freefall experience, where participants jump from an elevated platform. A state-of-the-art vertical wind tunnel generates powerful upward wind currents, allowing participants to hover and experience controlled freefall.



## BAG JUMP



### KEY FACTS

- Age Limit: 5 Years minimum
- Total Capacity: 1 jumper at a time
- Weight Limit: 120 kg maximum
- Throughput: 45 jumpers per hour

### OBJECTIVES

- To provide participants with a safe yet thrilling bag jump experience.
- To offer a memorable and adrenaline-pumping adventure suitable for various age groups
- To create a unique attraction that combines fun and adventure.



Bag Jump aims to provide adventure enthusiasts and families with a unique and exhilarating bag jump experience that combines safety with adrenaline. The primary attraction features a bag jump, where participants leap from an elevated platform onto a massive air cushion. The air cushion provides a soft and cushioned landing, ensuring participant safety.



## AERIAL ADVENTURE TRAIL



### KEY FACTS

- Age Limit: 6 years onwards
- Body Height: 1.10 minimum
- Body Weight: 130 Kg. maximum
- Throughput: Approx. 200 visitors per hour

### OBJECTIVES

- To provide participants with a unique and physically challenging adventure in a natural or urban environment.
- To create an immersive experience that combines physical fitness, teamwork, and mental agility.
- To offer a safe and unforgettable adventure suitable for thrill-seekers of various ages and skill levels.



Aerial Adventure Trail is an exhilarating outdoor attraction that combines physical challenges with safety and an immersive adventure environment. The attraction is an obstacle net trail suspended between trees, poles or structures. Participants navigate a series of nets, bridges, platforms and challenging obstacles while suspended above the ground.



# ADVENTURE SWING

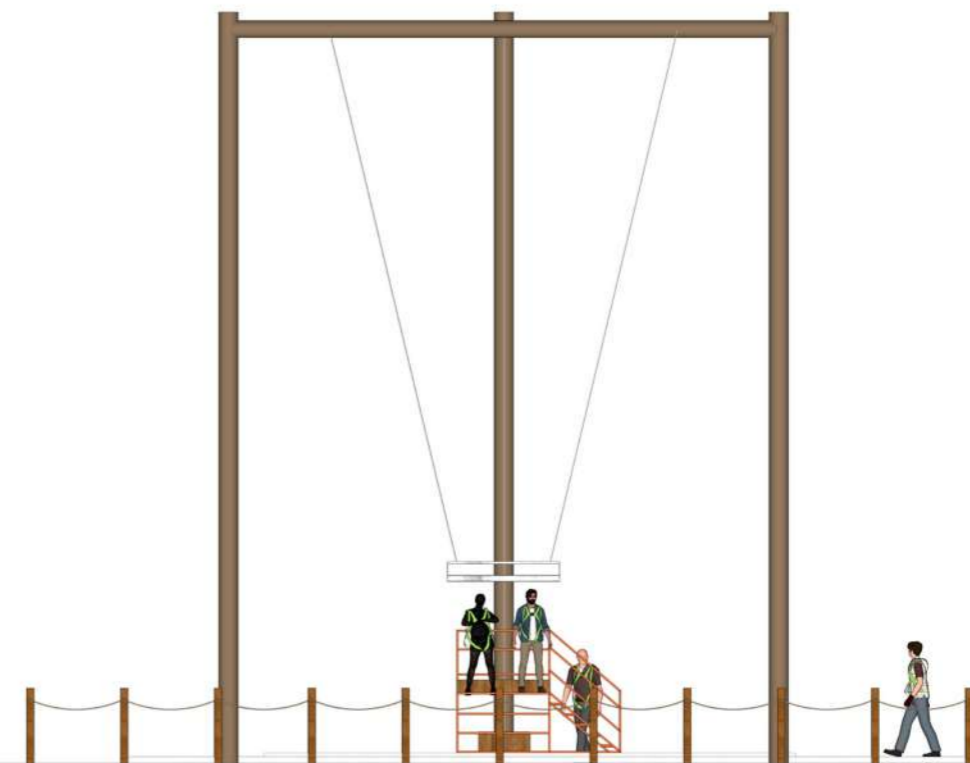


### KEY FACTS

- Age Limit: 6 years onwards
- Total Capacity: 2 guests at a time
- Body Weight: 120 Kg. maximum
- Throughput: Approx. 24 guests an hour

### OBJECTIVES

- To provide participants with a heart-pounding swing experience.
- To create a memorable and adrenaline-pumping adventure suitable for thrill-seekers of various ages.
- To establish a safe and engaging attraction that combines the joy of flight with adventure.

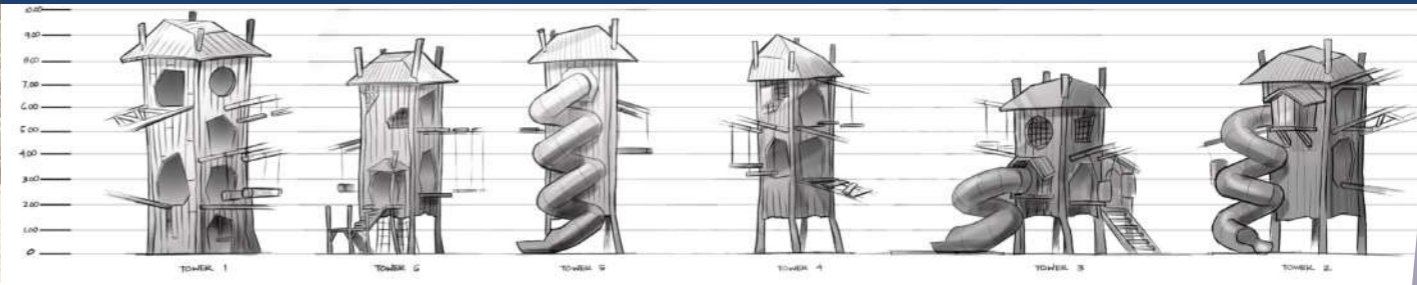


Giant Swing aims to provide adventure enthusiasts and families with an unforgettable swing experience that combines safety with adrenaline. The central attraction features a giant swing, where participants are seated and secured in harnesses. Participants are hoisted to a significant height before experiencing a thrilling freefall followed by an exhilarating swinging motion.

# ADVENTURE PLAY TRAIL



## CONCEPT SKETCHES

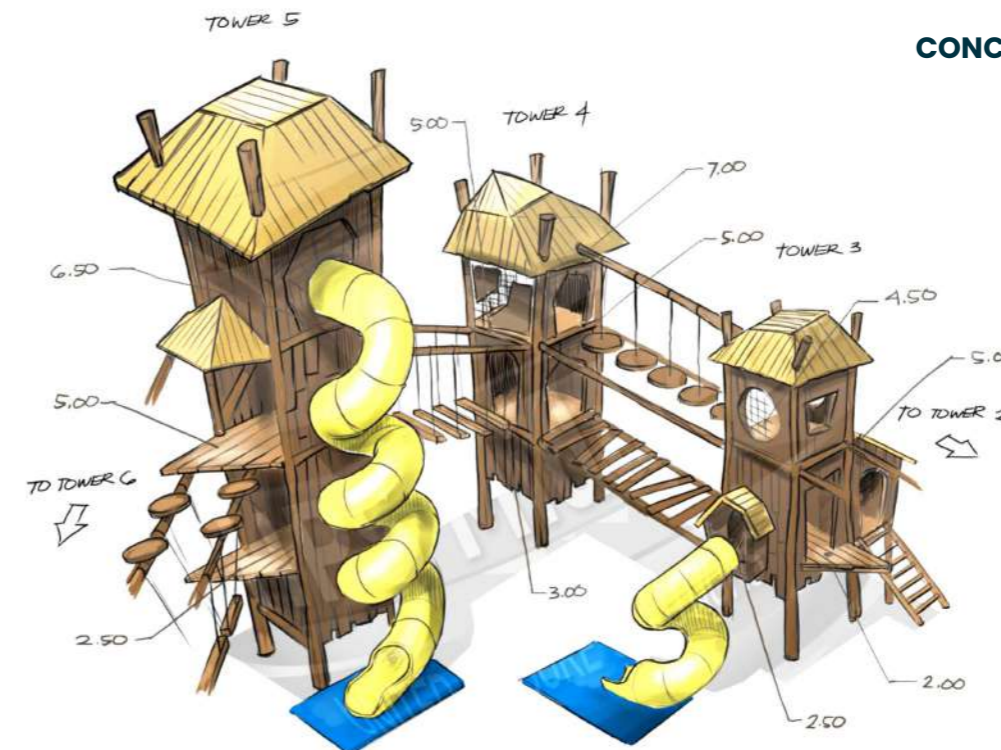


## KEY FACTS

- Age Limit: 6 years onwards
- Body Height: 1.10m minimum
- Body Weight: 130 Kg. maximum
- Throughput: Approx. 150 visitors per hour

## OBJECTIVES

- Inspire outdoor exploration and physical activity in children with a dynamic, nature-inspired play environment.
- Cultivate a love for nature, teamwork, and creativity through interactive play elements.
- Offer a safe, inclusive, and fun learning space for children of all ages.



## CONCEPT SKETCH

Adventure Play Trail is an innovative and immersive outdoor adventure play concept designed to ignite the spirit of exploration and imagination in children while connecting them with the wonders of nature. It aims to provide children with a play experience that fosters a connection to nature while promoting learning, creativity, and physical activity.

## ADVENTURE SOFT PLAY



### KEY FACTS

- Age Limit: 5 -12 years
- Body Height: 0.80 m minimum
- Body Weight: 130 Kg. maximum
- Throughput: Approx. 130 visitors per hour

### OBJECTIVES

- To create an interactive and imaginative play environment that encourages outdoor exploration, physical activity, and sensory development for children.
- To provide a safe and inclusive play space that promotes motor skills, teamwork, and creativity.
- To offer a unique and memorable adventure suitable for children aged 2 to 12 and their families.



Adventure Soft Play concept involves creating an engaging and safe play area for children that combines the fun of climbing and traversing obstacles with the comfort of soft, cushioned materials. Elements for such attraction include Softplay Nets, Sensory stations and Play elements inspired by the natural world, such as logs, balance beams, rock climb etc.



# SUPER ZIPLINE



### KEY FACTS

- Age Limit: 6 years onwards
- Total Capacity: 2 lines; 1 guest per line at a time
- Body Weight: 120 Kg. maximum
- Throughput: Approx 50 riders per hour
- Khasab Zipline -1.8 km long
- Speed: 120-130 kph
- Guinness Book of Records for the longest over-water zipline

### KEY FACTS

- To provide participants with an unparalleled and heart-pounding ziplining experience that combines high-speed thrills with breathtaking scenic beauty.
- To create a safe and unforgettable adventure suitable for adventure enthusiasts, tourists, and thrill-seekers of various ages and skill level.



Super Zipline is an innovative adventure attraction designed to provide participants a feeling of soaring through the skies while allowing them to capture the scenic beauty of the surroundings. Set in pristine natural surroundings and designed with safety, education, and environmental responsibility in mind, this concept promises to become a sought-after attraction for thrill seekers and nature lovers alike.

# WING SUIT JUMP PLATFORM



### KEY FACTS

- This is only for trained professionals

### OBJECTIVES

- To provide experienced wingsuit enthusiasts with a safe and thrilling launch platform for wingsuit jumps.
- To establish a world-class facility that caters to the global wingsuit community.
- To prioritize safety, training, and environmental responsibility in wingsuit jumping.



JUMPING



FLYING

Wing Suit Jump Platform is a groundbreaking adventure attraction dedicated to wingsuit jumping, offering experienced wingsuit flyers a thrilling platform to experience the beauty of Ras Al Khaimah from the skies. Participants, who must be experienced wingsuit flyers, will use their own equipment and undergo safety briefings before each jump.





# SKYRIDER



### KEY FACTS

- Age Limit: 6 years onwards
- Total Capacity: 1 guest at a time
- Body Weight: 120 Kg. maximum
- Throughput: Approx 45 riders per hour
- Track Length: 350 m

### OBJECTIVES

- To provide participants with an unforgettable aerial adventure that challenges their physical and mental abilities.
- To offer a unique bonding experience for families, friends, and corporate groups while promoting teamwork.
- To prioritize safety, inclusivity, and environmental responsibility throughout the adventure.



SkyRider is a simple but highly addictive thrill ride, giving the rider the unique sensation of flying, with the adrenaline rush of speed whilst swooping round bends. It's like a roller coaster and zip line combined into one, whilst powered by gravity. It is an exciting experience for anyone who likes speed and heights.

# ALPINE COASTER



### KEY FACTS

- Age Limit: 3-8 (supervised); 8 years & onwards
- Total Capacity: Up to 2 guests at a time
- Body Weight: 120 Kg. maximum
- Throughput: Approx 450 guests per hour
- Track Length: 2000 m

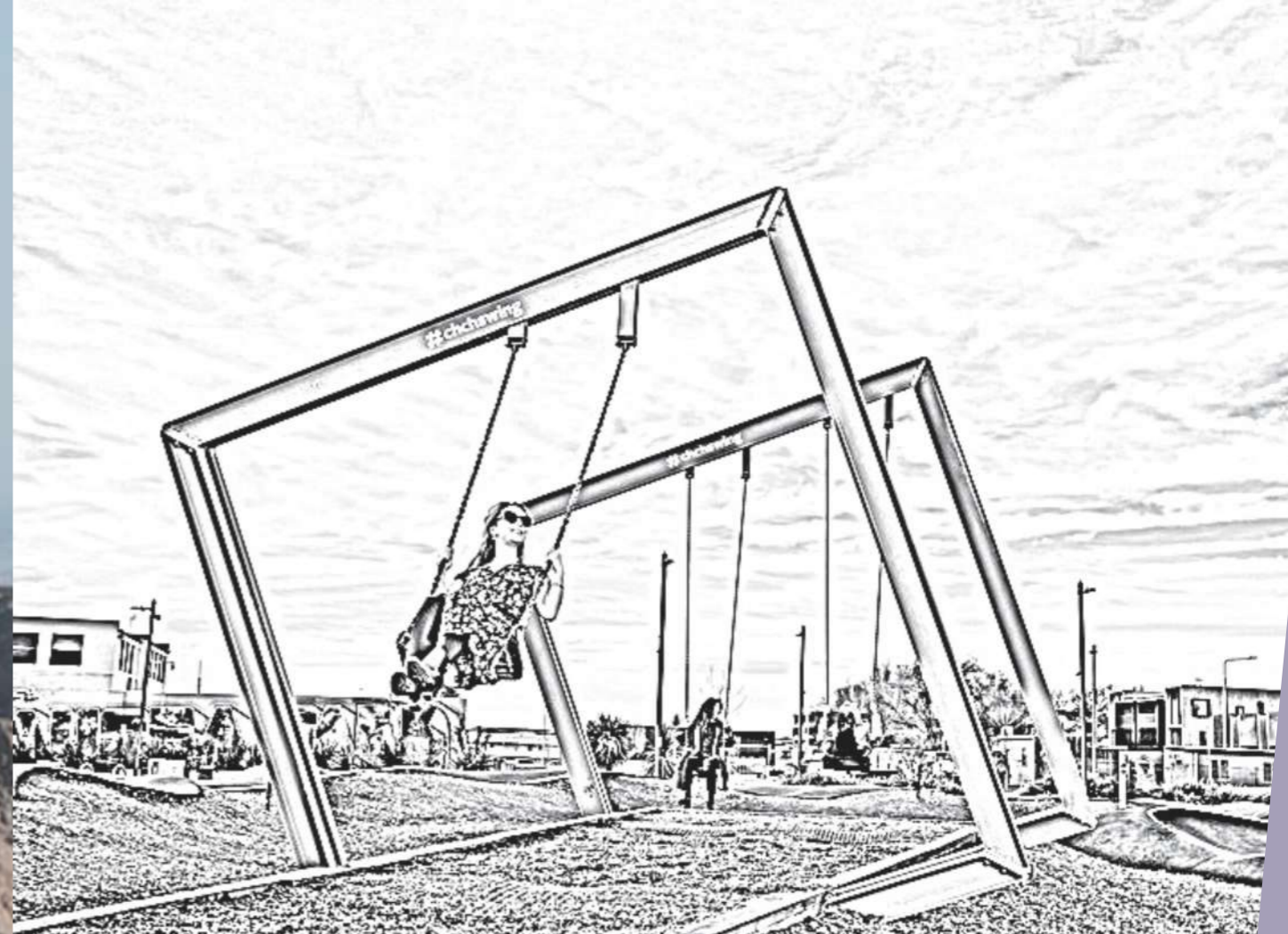
### OBJECTIVES

- To provide visitors with an unforgettable and thrilling experience that highlights the picturesque alpine terrain.
- To become a premier alpine coaster attraction, drawing adventure seekers, tourists, and families.
- To prioritize safety, sustainability, and an immersive mountain experience.



Alpine Coaster is an exciting adventure attraction that combines the exhilaration of a roller coaster with the natural beauty of an alpine landscape. Riders will sit in individual coaster cars equipped with safety restraints, let the track descend the mountainside, and take them through the thrilling drops, curves and scenic vistas.

# INSTAGRAMMABLE SWING

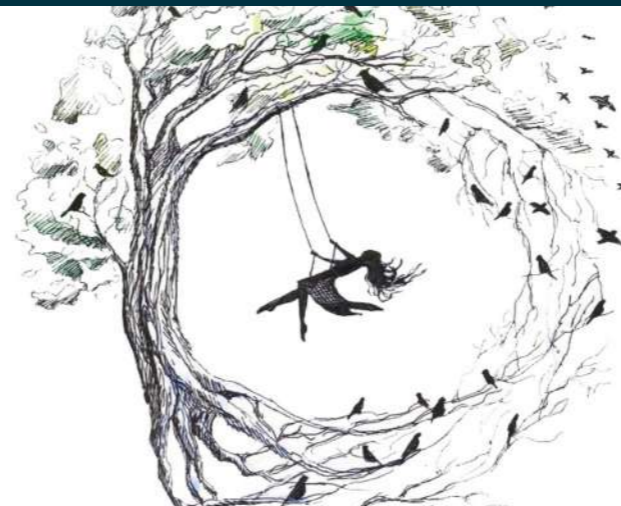


### KEY FACTS

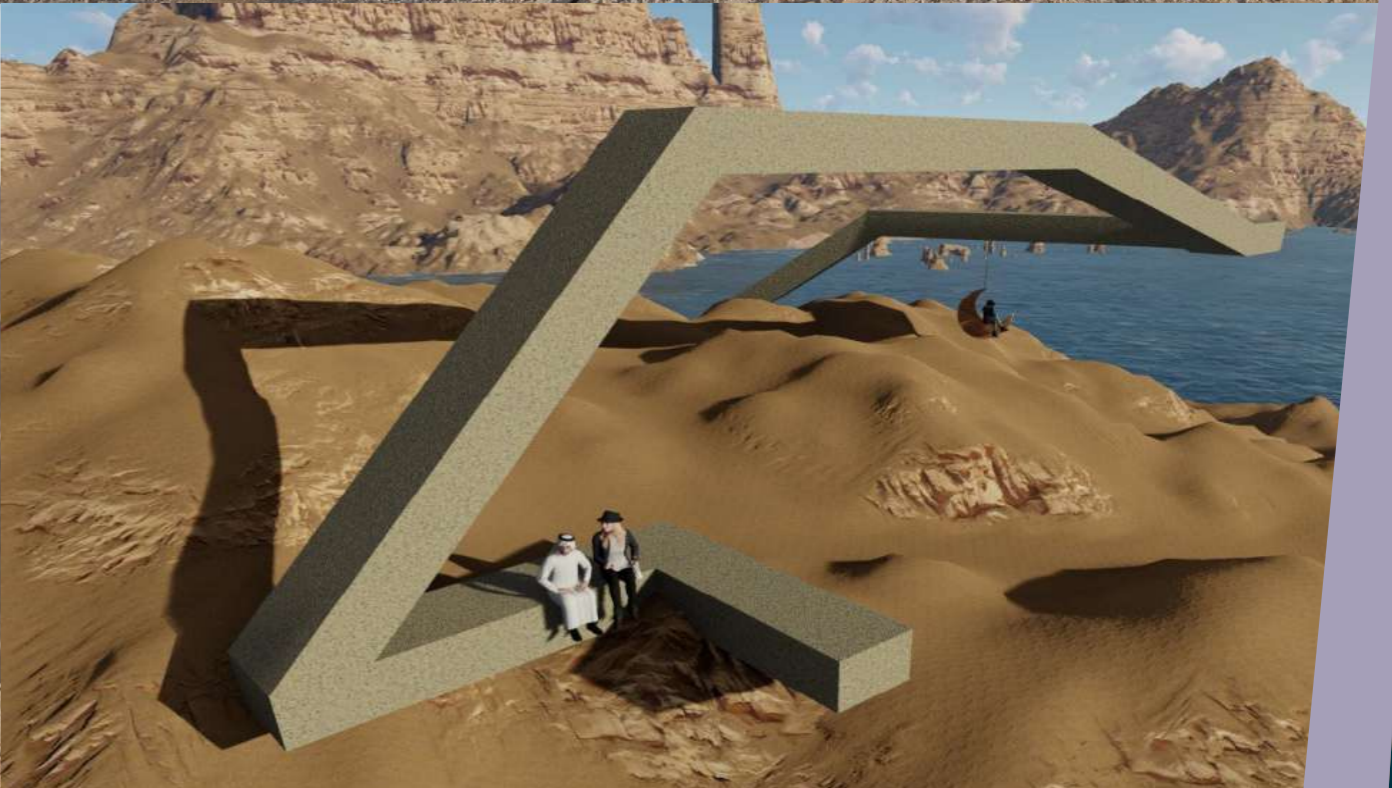
- Age Limit: 6 Years onwards
- Total Capacity: Up to 2 guests at a time
- Body Weight: 120 Kg. maximum
- Throughput: Approx. 100 guests per hour

### OBJECTIVES

- To offer visitors a memorable and shareable experience that combines the thrill of swinging with stunning photo opportunities.
- To become a top destination for Instagrammers, social media influencers, and tourists seeking iconic photo spots.
- To prioritize aesthetics, accessibility, and an immersive environment for photo enthusiasts.



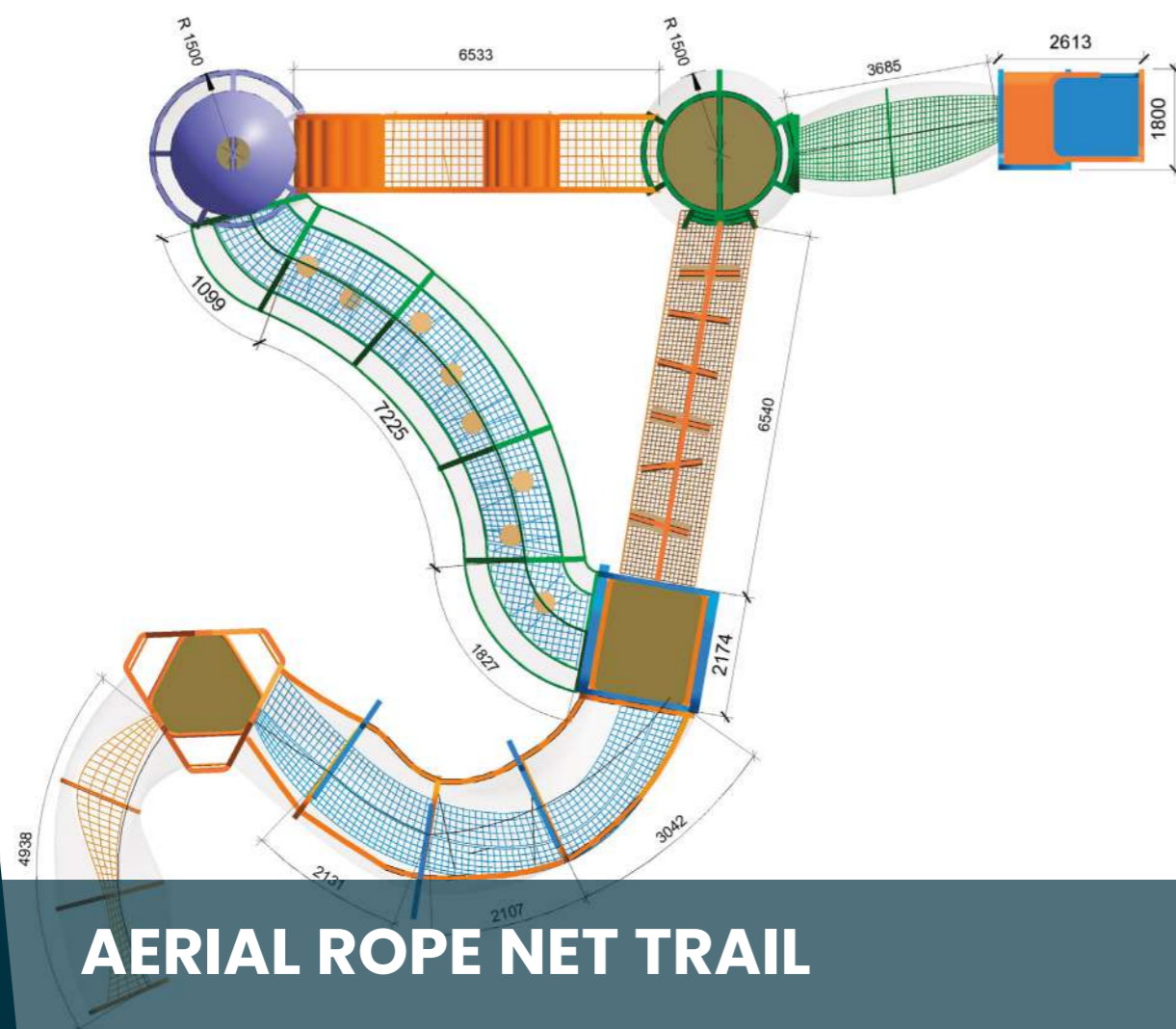
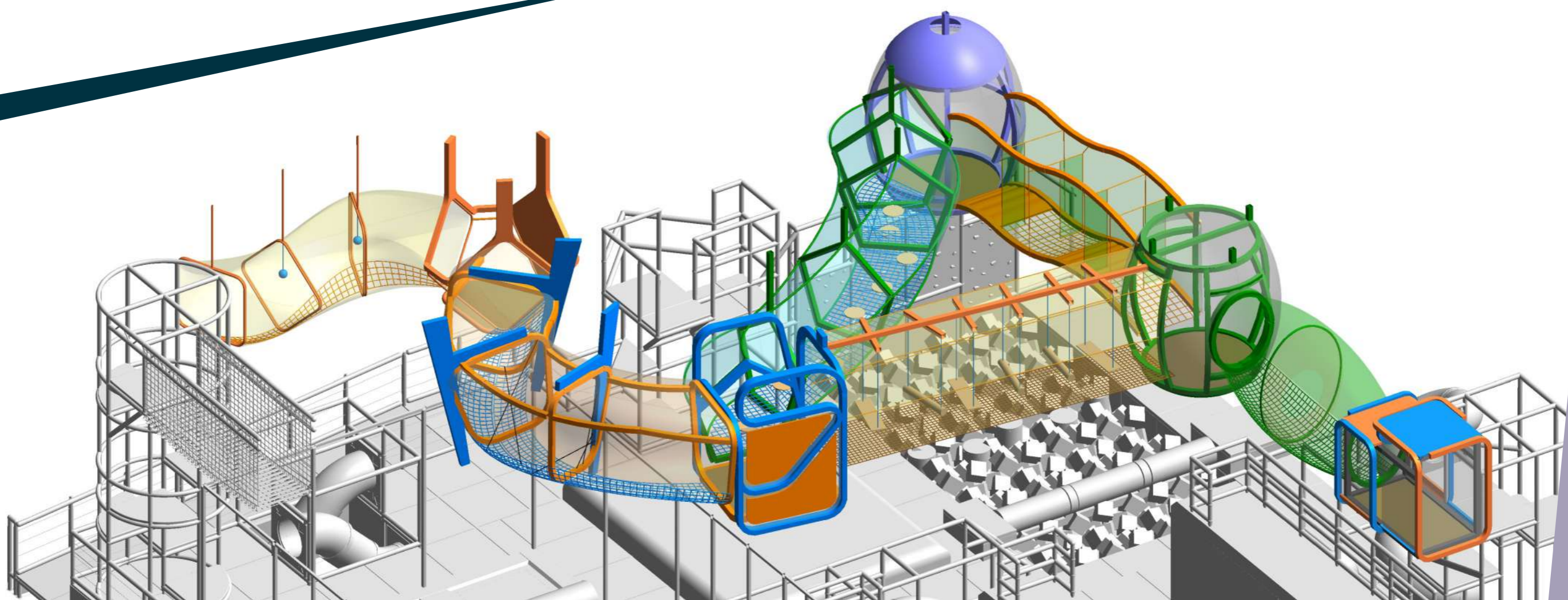
Instagrammable Swing aims to provide visitors with a visually captivating and shareable experience that combines the thrill of swinging with the opportunity to capture stunning Instagram photos.



# INSTAGRAMMABLE SWING

Designed with aesthetics, accessibility, and environmental responsibility in mind, this concept promises to become a must-visit destination for Instagrammers, influencers, and anyone seeking to capture moments in mid-air while enjoying a visually appealing and immersive environment.



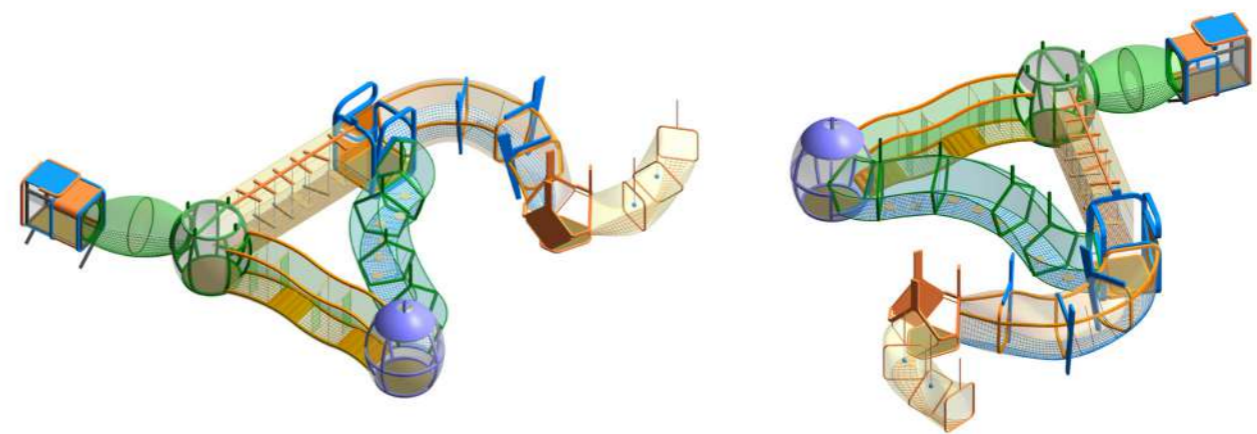


#### KEY FACTS

- Age Limit: 6 Years onwards
- Total Capacity: 40 guests at a time
- Body Weight: 120 Kg. maximum
- Throughput: Approx. 100 guests per hour
- Footprint: 92 sqm.

#### OBJECTIVES

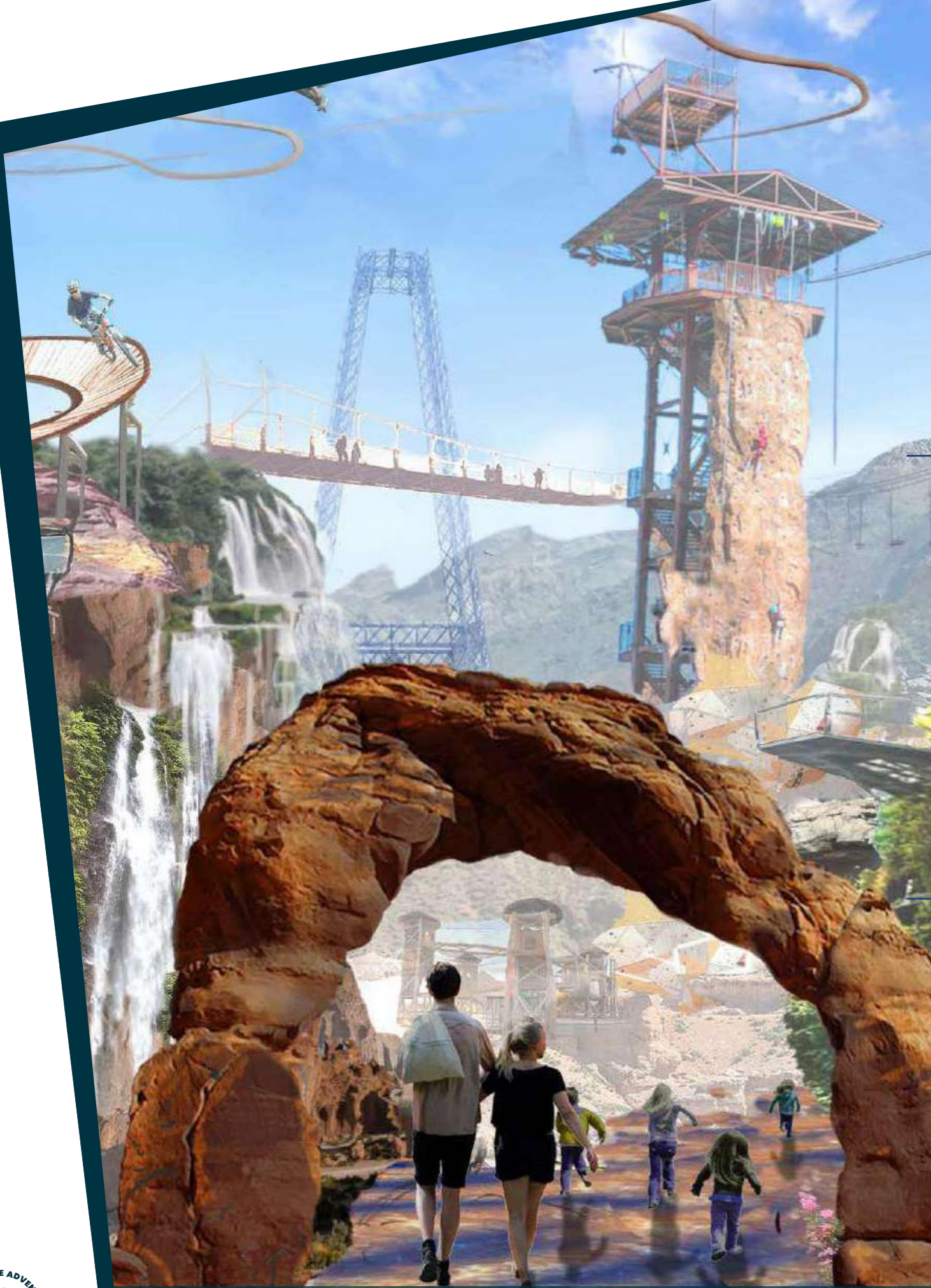
- To provide participants with a unique and physically challenging adventure that combines net climbing with scenic views.
- To become a sought-after attraction for adventure seekers, families, and nature enthusiasts.
- To prioritize safety, accessibility, and environmental responsibility throughout the adventure.



## AERIAL ROPE NET TRAIL



# ACTIVE ADVENTURE CONCEPT-1



## GUEST FLOW STUDY

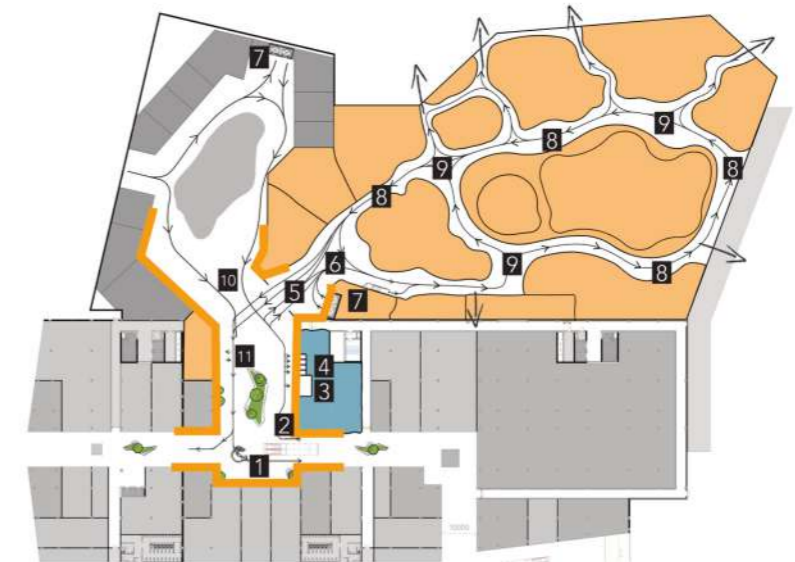
### Ground Level

1. Totem and Area Activation (screens, info displays etc) for Active Mountain within the Mall
2. Access from the Mall
3. Info Counter
4. Ticketing Booths (RFID ticket system)
5. Main Access into the Active Mountain Adventure Park
6. Welcoming Area (Distribution Buffer)
7. Vertical circulation/Connection with the upper Mezzanines (Elevators / Escalators)
8. Flow Circuit
9. Centers of Flow Distribution
10. Access / View from Bio - Garden
11. Mountain Activation: Zip Lines /Bikes
12. Active Mountain Shop

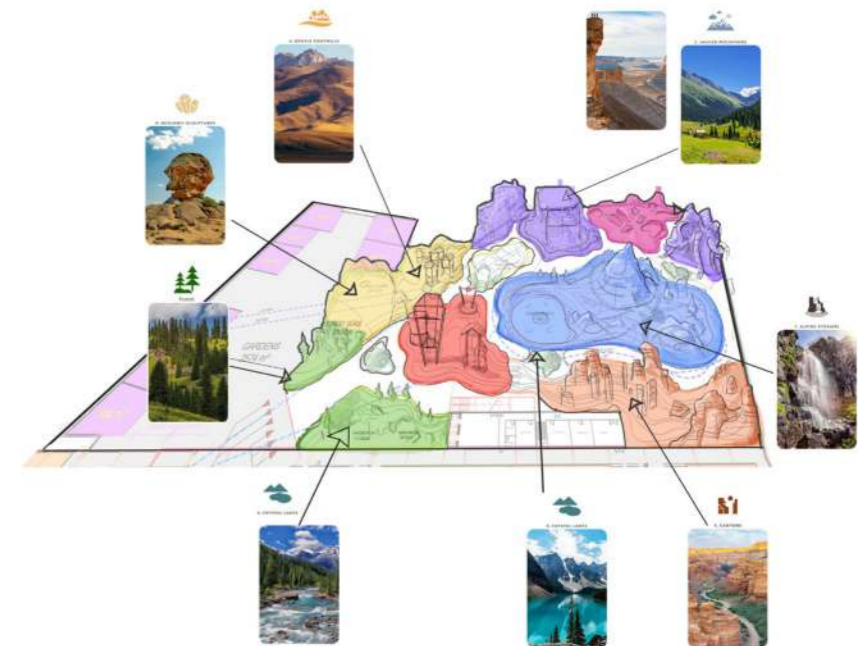
### Summary

Active Mountain activation within Mall and Bio-Garden: green spaces, open entrance, zip line and zip bikes expanding into both spaces.

Guest Flow centralized and oriented around the attraction zones connected to the main In and Out points and the additional maintenance, service and evacuation routes.



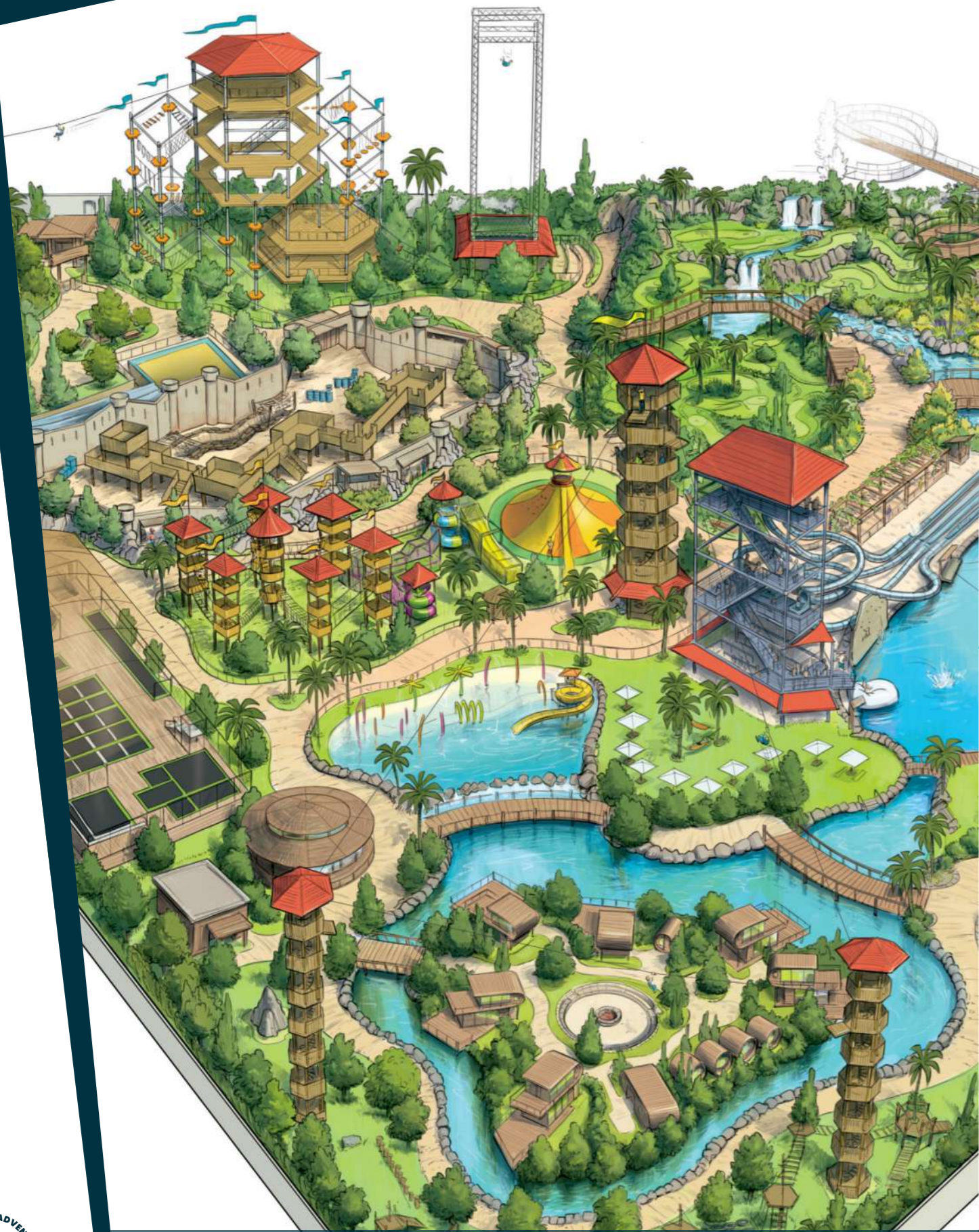
<span style="color: green;">■</span>	<b>Forest</b>
	-WaterPlay, Gems Mining, -Forest Glade Playground
<span style="color: yellow;">■</span>	<b>Rolling Hills/ Geologic</b>
	-Magic Mining -Fortress FreePlay
<span style="color: red;">■</span>	<b>Dry Steppe</b>
	-Thrill Zone -Freefall Drop Tower -SKydiver Tunnel -Adventure Tower -Human Silinshot
<span style="color: blue;">■</span>	<b>Alpine steppe</b>
	-Coaster Cart -Steam Train -Bumper Boat -Adventure Play Trail
<span style="color: purple;">■</span>	<b>Mountains</b>
	-X-Trail -Adventures Rope Course -Net Slide Climber
<span style="color: pink;">■</span>	<b>Solonchak</b>
	- Pump and Skills Bike/Skate Area
<span style="color: orange;">■</span>	<b>Canyons</b>
	-Fun CLimber -Boulder/Sports Climbing



## POV SKETCHES



Multiple levels include activity pathways, Bike lanes, Adventure trails, viewing platforms, entries for the various attractions and so much more. We have created areas for parents to watch their children and enjoy the many activities for all kids age ranges. For the Adrenaline Junkie and thrill seekers there's enough to do in a full day and there will be challenging feats for the advanced athlete.



**Adventure Zone**

Pine forest – An area of tall attractions reflected with taller, indigenous trees.  
 Key colours: All the greens plus active reds.  
 Key scents – pine, zatar.  
 The high-octane, high-altitude part of the park. This zone truly sets the thrillometer rising with a challenging mix of features, namely: 20m drop tower, ropes course, adventure course, Ju-jitsu dojo, a connecting zip-line covering the entire park, 15 clip & climb walls. The main gear-up and briefing building also hosts bathroom facilities and a first aid room.

**Family & Kids' Zone**

Deciduous Oak Forest: Rocky planting and colourful flowers and grasses.  
 Key colours - orange, crimson, pink, green.  
 Key scents - floral.  
 Something for everyone, this zone features a beautifully landscaped, eighteen-hole mini-golf course with a waterfall and mini lake plus raised viewing paths; a kids' wooden playground with shaded toddler area, covered trampoline park and dry slides. This area is designed to appeal to all members of the family of all skills and abilities.

**Wild Woods**

Deciduous Oak Forest: Rocky planting and colourful flowers and grasses.  
 Key colours - orange, crimson, pink, green.  
 Key scents - floral.  
 Occupying the South West corner of the park, the Wild Woods zone is home to the shaded, team-building and ninja course. The low structures required for this course, combined with the surrounding planting, will allow this area to function while not intruding on the peace of the private cabins. Connective towers for the zip-line are located here along with an outdoor pizza oven and seating area.

**Paint Ball Arena**

Rocky desert habitat: Hardy shrubs and bare boulders and tough grasses.  
 Key colours - limestone, sand, bleached greens.  
 By excavating the area, the paint ball arena will be sunken, with high walls and netting around it, and yet will still fit in with the overall look of the park. A rocky, landscaped perimeter will allow for winding pathways leading to observation cabins to permit safe viewing of the action.

**Adventure Lake**

Freshwater Habitat.  
 Key colours: Fresh blues, greens and active reds.  
 Key scents: Eucalyptus, potpourri.  
 A fun and active lake which will be visible to all guests but must be accessed through secured entry points as a separate, ticketed zone.  
 Features: Slide tower, aqua climbing wall, Blob, water cannon, slack lines, jump slides, changing facilities, kiddies' splash pad, and solar park.



**KEY FACTS**

- Body Height : 1.10 minimum
- Body Weight: 130 kg maximum
- Throughput Capacity : 2428 guests per hour
- Area Size: 33,000 sq. m.
- Build-Up Height: 30 m.



Adventure Kids Course is a thrilling outdoor obstacle course tailored for children. It features age-appropriate challenges like mini climbing walls, tunnel crawls, balance beams, rope swings, and cargo nets. Our goal is to provide a fun and safe outdoor adventure experience for children. With a range of obstacles and strict safety standards, it's the perfect attraction for families, schools, and children's events, promoting physical activity, teamwork, and unforgettable kid experiences.



**ACTIVE ADVENTURE CONCEPT-2**

For  
international  
inquiries

## HPS Play Company Middle East

Prime Business Center  
A-602, 6th Floor, Jumeirah Village Circle  
P.O Box 29799, Dubai UAE

+971 4 852 5835

info@hpsplayco.com

hpsplayco.com

For  
European  
inquiries

## HPS Play Company Austria

Gmundner Straße 40  
A-4664, Laakirchen

+43 (0) 7613 25 880 0

info@hps-playco.at

hps-playco.at



group members



HPS Play Company  
United Leisure Solutions

